



C.R.I. PUMPS

Pumping trust. Worldwide.



WASTE WATER SUBMERSIBLE PUMPS - 60Hz
DL, SL & SM SERIES



AN-ISO 9001 & ISO 14001 COMPANY



C.R.I. PUMPS
Pumping trust. Worldwide.

T H E B E G I N N I N G

of C.R.I., way back in 1961, was a resolute attempt to produce a few irrigation equipments using the limited facilities of an in-house foundry. Eventually the founder's dream was coming true as the small production unit he started kept growing rapidly. Now, after more than five eventful decades, it is an enormous, widely reputed organization, which produces more than 1200 varieties of perfectly engineered pumps and motors and sells its products in numerous countries spread across 6 continents.

C . R . I . I S O N E A M O N G

the few pioneers in the world to produce 100% stainless steel submersible pumps. Having achieved a record production capacity of over 1.5 million pumps per annum, today C.R.I. is rubbing its shoulders with the best brands in the world, with advanced technology and safety standards as its hallmarks.

T H E I N F R A S T R U C T U R E

of C.R.I. is pretty comprehensive with state-of-the-art machineries and a high potential in-house R&D recognised by the ministry of science and technology, Govt. of India - all within its own covered area of 150,000 square metres. The production environment is accredited with ISO 9001 & 14001 certifications and the product are CE, UR/UL, TSE & ISI Certified. The R&D team always stays in tune with the changing scenario and seldom fails in coming up with outstanding solutions

every time.

N E E D L E S S T O S A Y ,

behind this legendary growth lies the untiring, innovative, enthusiastic and dedicated team work. And, of course, a flawlessly maintained value system too. The name C.R.I. itself encapsulates the company's ethos: "Commitment, Reliability, Innovation".





C.R.I. PUMPS
Pumping trust. Worldwide.

Vision, Mission and Values

To be the industry leader providing best - in - class fluid management solutions to individual and institutional customers and societies in our chosen markets.

We will achieve this through our dedicated efforts to enhance the welfare of all our stakeholders and by living by our values of **commitment, reliability** and **innovation**.



WASTE WATER SUBMERSIBLE PUMPS

With the excellence gained in pump technology over the period of 50 years C.R.I. has introduced highly efficient and reliable sewage & drainage pumps in a comprehensive range. These pumps are available with different materials of construction and feature a multitude of applications in waste water handling and treatment.

Besides expanding its product portfolio, C.R.I. is firmly committed to contribute a vital role in creating a more pleasant and affluent living condition worldwide, which is one among its ambitious goal.

All C.R.I. drainage & sewage pumps are perfectly powered by motors designed to deliver optimal performance and to withstand vagaries of weather and power fluctuation.

C.R.I.'s well equipped R&D coupled with the latest engineering software & technology, highly flexible production facilities, stringent, integrated & modern quality control systems well tuned logistics system & steadfast work force ensure delivery of high standard and flawless products. Proven performance, functional design, quality and after sales support ensure trouble free operation year after year.

Features

I International standard design I Auto cut I Silicon Carbide / Tungsten Carbide mechanical seal I Good quality and performance.

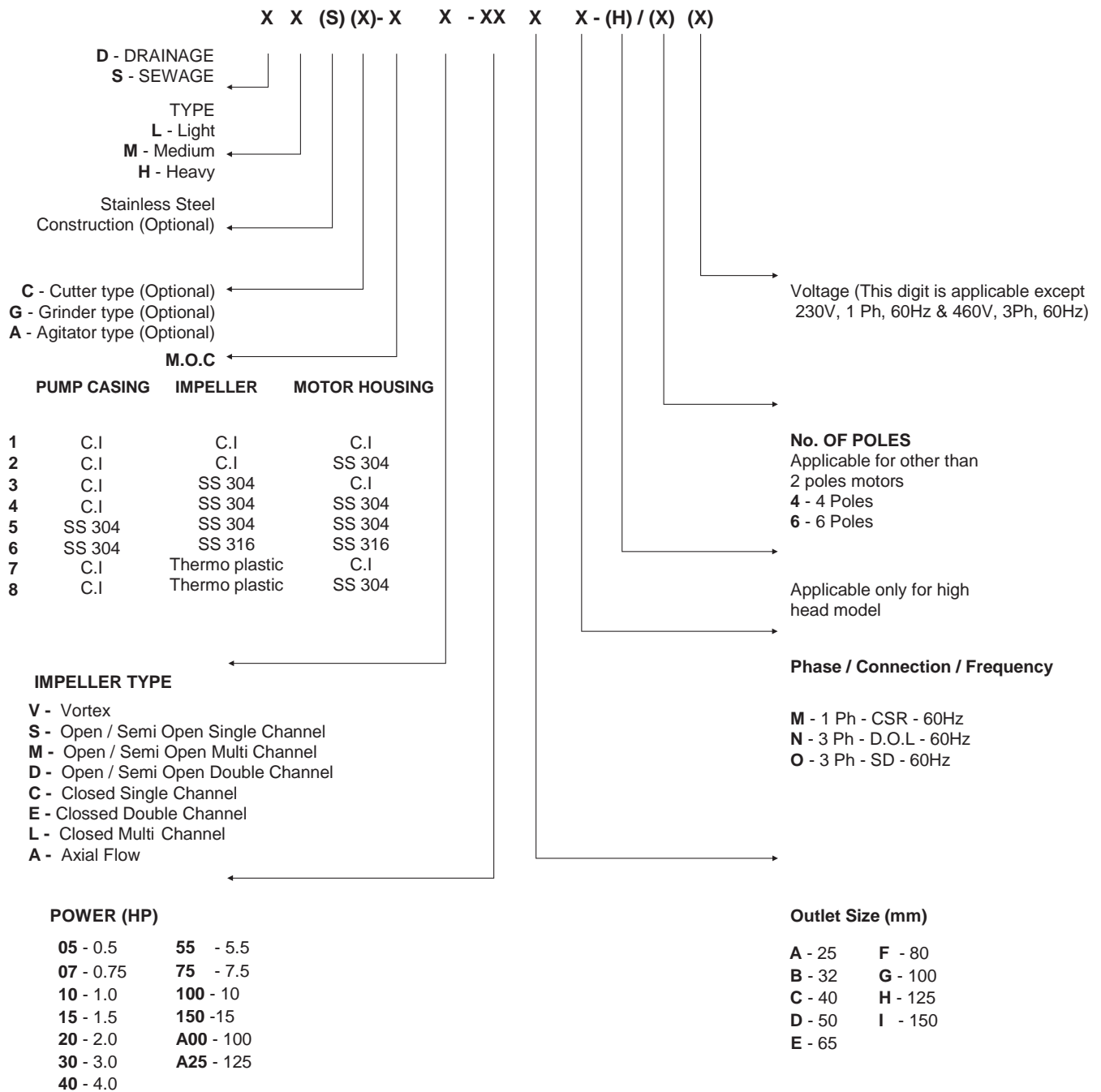
Multiple impeller design to handle different sewage & waste water.

Full range from low head to high head, Compact & easy installation, Equipped with guide rail system.

Applications

I Draining sewage water from hotels, houses, commercial buildings complexes etc I Pumping waste water in industries I Tunnel and mines I Pumping sewage water from stock farms & manhole sewer I Sewage treatment plants I Pumping municipal sewage water I Septic tank I Leather factories I Aquaculture water supply and drainage I Dewatering in construction sites I Water supply for agriculture irrigation, underground water pumping I Landscape and horticulture irrigation I Pumping of water from rivers & lakes.

WASTE WATER SUBMERSIBLE PUMPS



Description

SL-2V-07DM/D : 2", 0.75HP, IPh, 220V, 60Hz, LIGHT SEWAGE PUMP WITH VORTEX IMPELLER

DL-1V-05DM/D : 2", 0.5HP, IPh, 220V, 60Hz, LIGHT DRAINAGE PUMP WITH VORTEX IMPELLER

SM-1S-30FN/D : 3", 3HP, 3Ph, 220V, 60Hz, MEDIUM SEWAGE PUMP WITH SEMI OPEN SINGLE CHANNEL IMPELLER

SM - SERIES

Technical Specification

Power Range	2HP - 10HP
Speed	3450 rpm
Version	3Ph, 220V, 60Hz, A.C. 3Ph, 380V, 60Hz, A.C.
Degree of Protection	IP 68
Insulation Class	E
Motor Type	Dry - type
Duty	S1
Max. Immersion Depth	5m
Sealing	Mechanical Seal
Impeller type	Vortex Impeller & Semi Open type channel Impeller
Max. Ambient Temp.	40°C
Outlet Size	2", 3" & 4"

Materials of Construction

Pump Casing	Cast Iron
Motor Shell	SM - 1V & SM - 1S : Cast Iron SM - 2V : SS 304
Impeller	Cast Iron
Motor Shell	Carbon #45+ SS 304
Mechanical Seal	Ceramic - Graphite, Silicon Carbide - Carbide alloy

Liquid Characteristic

Max. Liquid Temp.	40°C
Max. Working Pressure	6 Bar
Solid Passage upto	30mm



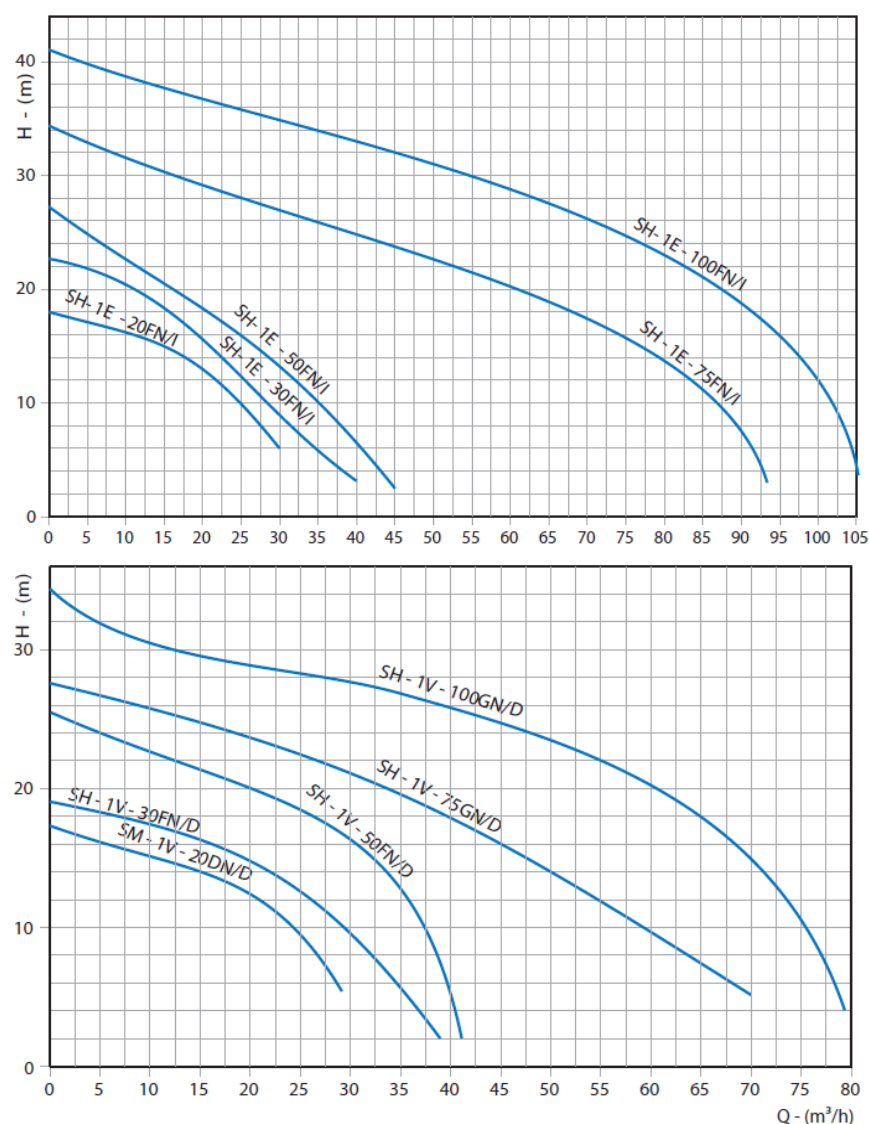
SM-2V

SM-1S & SM-1V

In view of continuous developments, the information / description / specifications / illustrations are subject to change without notice.

Sewage Pumps - SH Series

Performance Curves



Performance Table

Model		Outlet Size	Power in (HP)	Solid Passage (mm)	Rated Head (m)	Rated Flow (m³/h)	Max. Head (m)	Ef f. (%)
T hree P has e-220V	T hree P has e-380V							
SH - 1E - 20FN/I	SH - 1E - 20FN/I	2"	2	25	15	16	18	32.5
SH - 1E - 30FN/I	SH - 1E - 30FN/I	3"	3	25	17.5	17	22.6	37.35
SH - 1E - 50FN/I	SH - 1E - 50FN/I	3"	5	25	13.5	30	27.6	41.8
SH - 1E - 75FN/I	SH - 1E - 75FN/I	4"	7.5	30	20	60	34.5	52.5
SH - 1E - 100FN/I	SH - 1E - 100GN/I	4"	10	30	24.5	75	41	46.88
SH - 1V - 20DN/D	SM - 1V - 20DN/I	2"	2	22	13.5	16	17.5	36.65
SH - 1V - 30FN/D	SM - 1V - 30FN/I	3"	3	25	13.5	24	19	35.67
SH - 1V - 50FN/D	SM - 1V - 50FN/I	3"	5	25	16	31	25.4	33.51
SH - 1V - 75GN/D	SM - 1V - 75GN/I	4"	7.5	30	18	40	27.5	35.57
SH - 1V - 100GN/D	SM - 1V - 100GN/I	4"	10	30	24.5	47	34.5	37.17

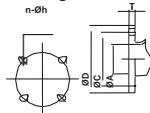
Sewage Pumps - SM Series

Dimensional Drawing

Flange - A

A	D	C	T	n-Øh
56	155	120	14	4-Ø19

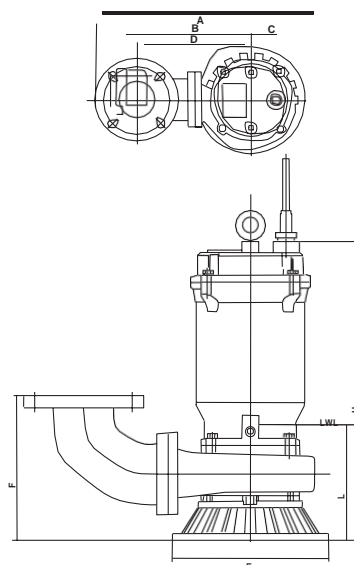
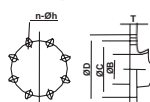
Flange - A



Flange - B

B	D	C	T	n-Øh
80	185	150	17	8-Ø19
100	210	175	20	8-Ø19

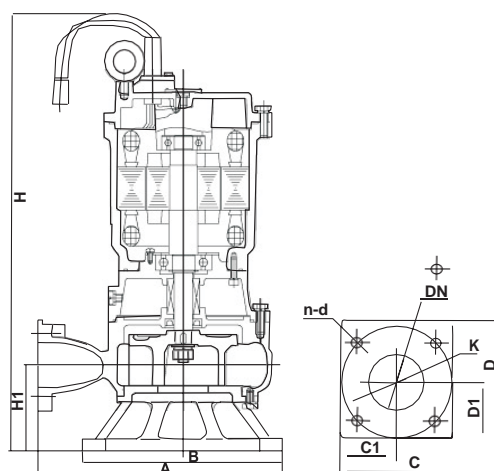
Flange - B



Dimensional Details

Modelo		Outlet Size	Power in (HP)	Dimensions (mm)								Weight (kg)
Three Phase-220V	Three Phase-380V			A	B	C	D	E	F	H	L	
SM - 1S - 20DN/D	SM - 1S - 20DN/I	2"	2	420	309	111	231	221	190	416	416	32
SM - 1S - 30FN/D	SM - 1S - 30FN/I	3"	3	470	350	120	257	240	222	430	430	38
SM - 1S - 50FN/D	SM - 1S - 50FN/I	3"	5	470	350	120	257	240	222	460	460	42
SM - 1V - 20DN/D	SM - 1V - 20DN/I	2"	2	389	300	89	221	144	157	388	388	29
SM - 1V - 30FN/D	SM - 1V - 30FN/I	3"	3	449	350	99	257	190	204	435	435	37
SM - 1V - 50FN/D	SM - 1V - 50FN/I	3"	5	449	350	120	257	190	204	465	465	41
SM - 1V - 75GN/D	SM - 1V - 75GN/I	4"	7.5	512	389	123	296	245	246	593	593	68
SM - 1V - 100GN/D	SM - 1V - 100GN/I	4"	10	524	401	123	296	245	281	658	658	78

Dimensional Drawing



Dimensional Details

Model		Outlet Size	Power in (HP)	Dimensions (mm)											Weight (kg)
Three Phase-220V	Three Phase-380V			H	H1	A	B	DN	K	C	C1	D	D1	n-d	
SM - 1S - 75GN/D	SM - 1S - 75GN/I	4"	7.5	600	103	346	290	100	155.6	140	70	150	70	4-Ø12	86
SM - 1S - 100GN/D	SM - 1S - 100GN/I	4"	10	660	103	346	290	100	155.6	140	70	150	70	4-Ø12	92

GUIDE RAIL SYSTEM



C.R.I. Guide Rail System consists of a base elbow, guide rails, top bracket, sliding hook & chains.

Features

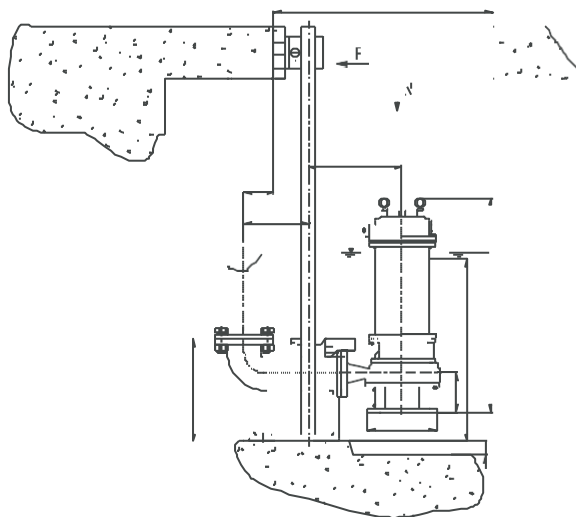
Guide Rail System is used for easy & hassle free installation. Further this helps for raising / lowering the pump quickly & conveniently for maintenance without entering the sump and without disturbing the pipe connections.

Applications

Waste water pumping stations where the pumps are subject to regular maintenance & inspection such as Effluent Treatment Plants (ETP), Sewage Treatment Plants (STP) & Sewage Pits.

* All our Medium Sewage pump models (SM – Series) can be supplied with guide rail system.

Auto - Coupling Installation



W I N N I N G W A Y S

When you have a good thing going it is quite in the fitting of things that recognitions come our way. Several prestigious awards, which decorate our shelf, say it all. These rewards not only acknowledge our position as a leader in the water pump industry but also serve as reminders about what the customer expects from a winner. And we, as ever, have our ears perfectly tuned to customer expectations.



High
performance
sewage and
drainage pumps
to meet a
wide range of
applications

C.R.I. PUMPS (PVT) LIMITED

(International Division)

7/46-1, Keeranatham Road, Saravanampatty, Coimbatore - 641 035, India. Tel : +91-422-3911610, 3911612.
Fax : +91-422-3911600 e-mail : cri@criexports.com website: www.cripumps.com

C.R.I. PUMPS S.A. (PTY) LIMITED

P.O. Box 6292, Halfway House, Midrand - 1685, Johannesburg,
South Africa. Tel : +27-11-8058631 / 32 Fax : +27-11-8058630
e-mail : cri@cripumps.co.za website : www.cripumps.co.za

Branch : Capetown: + 27-21-931 2516

**C.R.I. POMPA SANAYİ VE TİCARET
LİMİTED ŞİRKETİ**

10032 Sk. No:12 A.O.S.B. 35620 Çiğli-İzmir-Türkiye.
Tel:+90-232-328 22 99 Fax:+90-232-328 23 33
E-mail: cri@cripompa.com Website: www.cripompa.com

C.R.I. PUMPS (Shanghai) Co., Ltd.

Building 53 (No. 17), 588 Yindu Road, Minhang District,
Shanghai, China. Tel: 021-54405082, Fax: 021-54405083
web: www.bombascri.com.cn e-mail: cri@bombascri.com.cn

C.R.I. PUMPS (FZE)

P.O. Box 7988, A4-40 SAIF-Zone, Sharjah, U.A.E.
Tel : +971-6-5573041 (3 Lines), Fax : +971-6-5573042
e-mail : cripumps@eim.ae

C.R.I. BOMBAS HIDRÁULICAS LTDA

Av. Rodrigo Fernando Grillo, 457, Jd. Manacas,
CEP - 14.801-534, Araraquara - SP, Brasil.
Fone : +55-16-3331 1099, Fax +55-16-3331 5344
e-mail : cri@cribombas.com.br website : www.cribombas.com.br

Filial : Jabotão dos Guararapes-PE. Fone : +55-16-81487012

BOMBAS C.R.I. ESPAÑA,S.L.

Polígono Industrail El.Bony Calle 31, No.137, 46470
Catarroja (Valencia) Spain.
Tel: +34-96 1842 974 Fax: +34-96 1842 977.
Email: cri@bombascri.es Website: www.bombascri.es